

Alto Smooth™ Application Instructions

Step 1: First Coat of Alto™



Apply the first coat of Alto™.



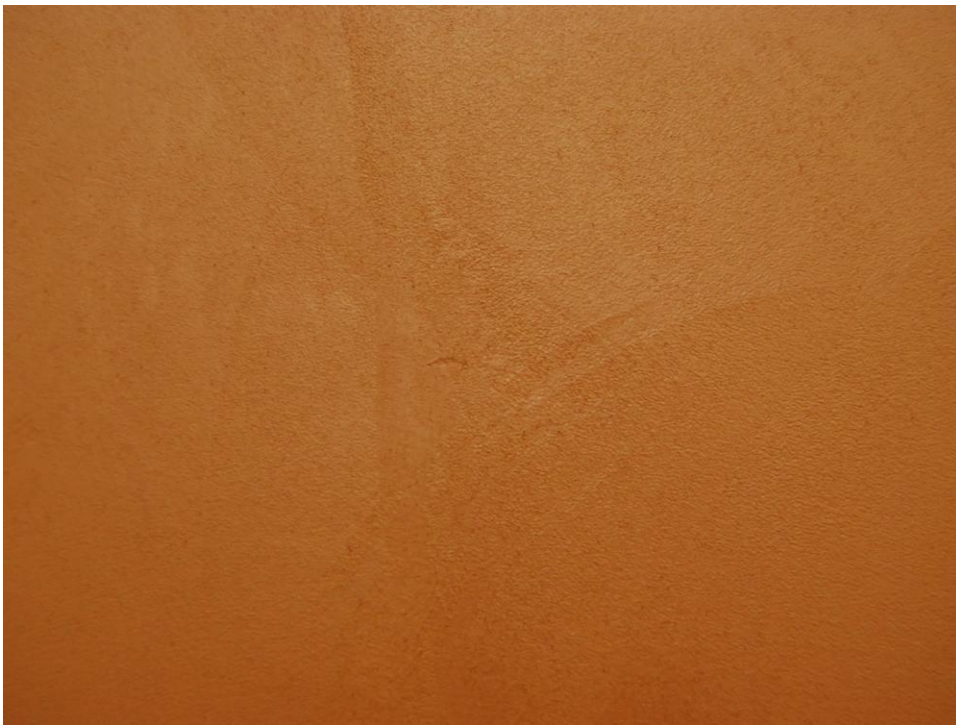
Apply this coat in random, decorative trowel strokes.

Alto Smooth™ Application Instructions

Step 1: First Coat of Alto™ (continued)



Avoid using long, repetitive trowel strokes.



Finished first coat of Alto™. Allow to dry 2 to 3 hours before proceeding.

Alto Smooth™ Application Instructions

Step 2: Second coat of Alto™



Apply the second coat of Alto™.



Apply this coat using random, decorative trowel strokes.

Alto Smooth™ Application Instructions

Step 3: Water Trowel



Lightly mist the Alto™ with water and trowel down to compress and smooth out.



Use random, decorative trowel strokes when water troweling.

Alto Smooth™ Application Instructions

Step 4: Hard Trowel



If increased mottling or a higher sheen is desired, burnish using a clean, dry trowel 30 to 40 minutes after water troweling.



Finished Alto Smooth™.