

# Brio™ Application Instructions

## *Step 1: Basecoat*



Apply a tinted basecoat of Solido™, Alto™, or OmniCoat™.



Apply the basecoat in random, decorative trowel strokes.

# Brio™ Application Instructions

## *Step 1: Basecoat (continued)*



Finished basecoat. Allow to dry for 3 to 4 hours before proceeding.

## *Step 2: First coat of Brio™*



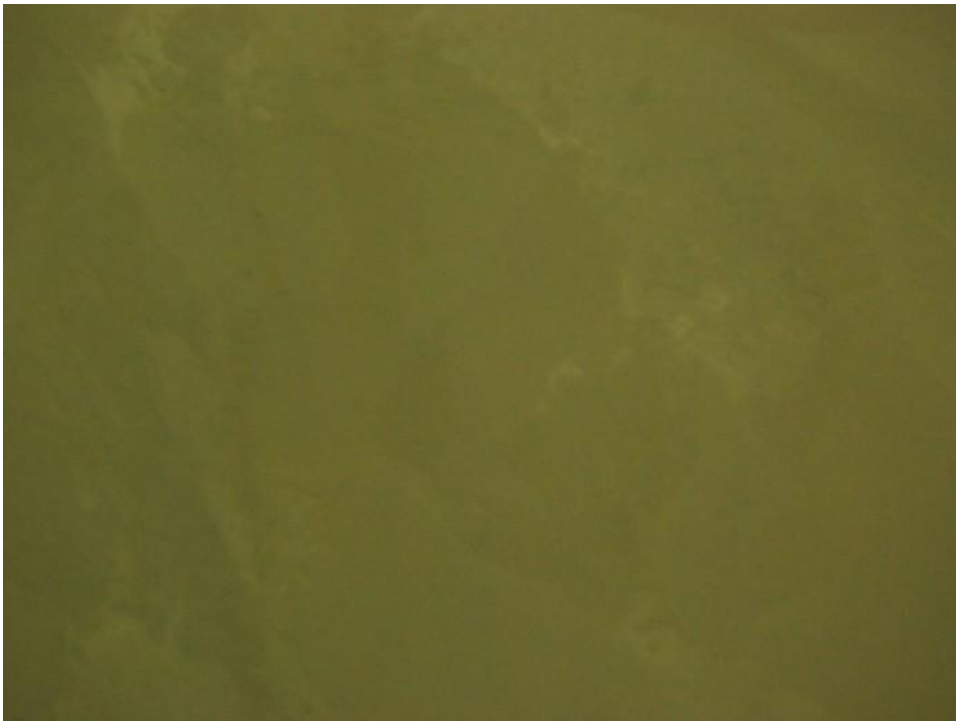
Apply the first coat of Brio™ on your basecoat.

# Brio™ Application Instructions

## *Step 2: First coat of Brio™ (continued)*



Apply Brio™ using random, decorative trowel strokes.



Finished first coat of Brio™. Allow to dry for 3 to 4 hours before proceeding.

# Brio™ Application Instructions

## *Step 3: Second coat of Brio™*



Apply the second coat of Brio™ using random, decorative trowel strokes.



Finished second coat of Brio™. Allow to dry for 20 to 30 minutes before proceeding with the initial burnish.

# Brio™ Application Instructions

## Step 4: Burnishing



Lightly burnish the entire surface. Allow surface to dry for another 1 to 2 hours before proceeding with the final burnish.



Burnish until the desired amount of mottling and shine is achieved.

# Brio™ Application Instructions



Finished Brio™.