

Alto Tuscany™ Application Instructions

Step 1: First Coat of Alto™



Apply the first coat of Alto™.



Apply this coat using random, decorative trowel strokes.

Alto Tuscany™ Application Instructions

Step 1: First Coat of Alto™ (continued)



Avoid using long repetitive trowel strokes.



Finished first coat of Alto™. Allow to dry 2 to 3 hours before proceeding.

Alto Tuscan™ Application Instructions



Step 2: Texture Coat



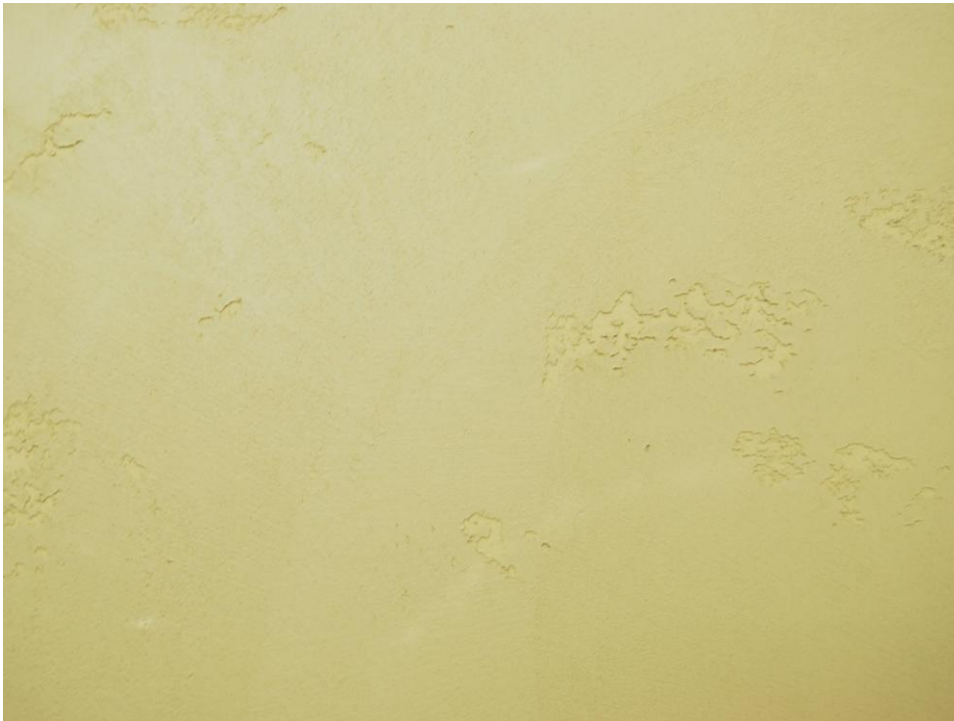
Apply a loose texture coat of Alto™ to an area of approximately 4 square feet.



Using increased trowel pressure and more Alto™, close up the texture to desired degree. No more than 5% to 10% of the Alto™ basecoat should be left exposed.

Alto Tuscany™ Application Instructions

Step 2: Texture Coat (continued)



Finished texture coat. Once surface has dried to a matte appearance (approximately 10 to 15 minutes), proceed to the next step.

Step 3: Colorwash



Lightly mist an area of about 4 square feet with water and trowel down.

Alto Tuscany™ Application Instructions

Step 3: Colorwash



Immediately after water troweling, spray a small amount of VariStain™ on to the Alto™ and trowel into the wet surface.



Watch out for water accumulation in the depressions. Using a downward motion, trowel out any drips that appear before they dry.

Alto Tuscany™ Application Instructions



Finished Alto Tuscany™ with Colorwash.